

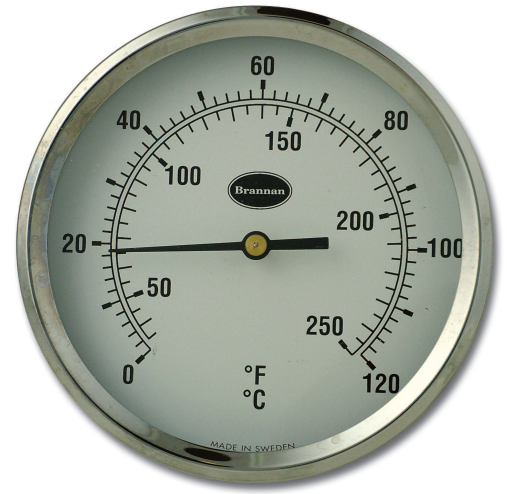
100mm Dial Thermometer - Direct Mounting - Back Entry, 100mm Stem

Applications

- Heating, ventilation, air-conditioning
- Hot water
- Light industrial

Standard Product Specifications

Design:	BS EN 13190
Accuracy Class:	2
Case:	100mm, black steel with Chrome Bezel
Connection:	Push fit, back entry
Stem Diameter:	9mm
Stem Lengths:	100mm
Pocket:	1/2" BSP brass
Window:	PMMA
Pointer:	Black plastic
Ranges:	-20 to 60°C&F 0 to 120°C&F 0 to 160°C&F
Operating Temperature:	-40 to +80°C
Storage Temperature:	-40 to +60°C
Temperature Element:	Bimetal
Protection:	IP 54 (BS EN 60529:1992)
Dial Weight:	203g (including pocket)
Box Weight:	42g
Total Weight:	245g
Dial Dimensions:	127 x 100mmØ
Box Dimensions:	130 x 105 x 105mm



Product Illustrated
31/641/0



Standard Product Reference Numbers

Range	Product No
-20 to 60°C&F	31/644/0
0 to 120°C&F	31/641/0
0 to 160°C&F	31/645/0

100mm Dial Thermometer - Direct Mounting - Back Entry, 100mm Stem

Optional Product Specifications

- Range:** Customer to specify
- Class:** 1
- Case:** Stainless Steel
- Pocket:** Stainless Steel
- Sensor Mechanism:** Stainless Steel
- Connection:** Other sizes/materials inc. NPT
- Filling:** Glycerine (with Stainless Steel case)
- Logos:** Available (quantity dependent)

Special products can be supplied to order. Quantities required will affect unit price and initial leadtime may be extended.

